

# Exciting Fall Offerings From RSK Farms

Selling at Agribition, Regina, SK - Nov 22,

**RSK 64Y Sells at CWA Sale!**

Safe to Early Service By TH Victor 719T



RSK Down Under 6U X Ladies Man 4L

RSK Miss Sage 64Y (DLF, IEF, HYF)

2011 CWA Class Winner

2012 WHC Class Winner & Res. Junior Yearling

CE	BW	WW	YW	MM	TM	MCE	SC	CW	ST	MPI	FMI	REA	MARB
-1.4	5.7	48.0	85.0	16.5	40.5	0.1	0.6	108.6	0.2	144.4	149.4	0.43	-0.14

Super stylish, high volume, great muscled female, one of the best we have raised! Definite donor possibility. Terms to be announced!

Also Selling 4 Full Sib Embryos to RSK Miss Sage 64Y



RSK Down Under 6U  
(DLF, IEF, HYF)



RSK 4L Sage 23S  
(DLF, IEF, HYF)



World Hereford Conference



(DLF, IEF, HYF)



(DLF, IEF, HYF)



Full sister to choice lot!

RSK Miss Tamara 8X (DLF, IEF, HYF)

2012 MHA Field Day Champion 2 Yr Old Cow

2011 MLE MOE Res. Champion Yearling

Sold in Last Years CWA Sale to Mark Knutson

Selling Choice of Walk Hard Heifer Calves

Walk Hard X Aberdeen

RSK Miss Tamara 28Z

RSK Miss Tamara 23Z

CE	BW	WW	YW	MM	TM	MCE	SC	CW	ST	REA	MARB
-2.4	4.2	53.9	90.7	15.6	42.6	1.2	0.6	105.3	-1.1	0.53	0.06

Fancy made and very functional females, will have great udders and be great matron females. Great competitive Junior prospects for Bonanza 2013 in Brandon, MB.

## A Program That Stands Out!

Site 520, Box 7 - Brandon, MB - R7A 5Y5

Rae & Stephanie, Stephen and Sarah: (204)-763-4459

Fax: (204)-763-4008

Andrew & Tiara: (204)-573-9529

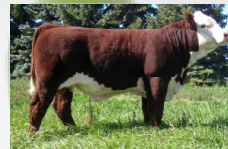
Do not hesitate to give us a call, we are happy to answer any questions that you might have regarding our program or offerings.

Videos and Full Sale Information Available at [www.rskfarms.ca](http://www.rskfarms.ca)

Selling at MHA Good as Gold Sale, Brandon, MB - Dec. 6, 2012



[www.rskfarms.ca](http://www.rskfarms.ca)



RSK 7W Big Bang ET 19Z (DLF, IEF, HYF)

CE	BW	WW	YW	MM	TM	MCE	SC	CW	ST	REA	MARB
-1.6	5.9	53.8	95.4	19.4	46.3	2.9	0.5	111.7	-0.1	0.43	-0.13

Full Sib Embryos

To RSK 19Z will

sell also!



RSK 7W Miss Vicki 17Z (DLF, IEF, HYF)

CE	BW	WW	YW	MM	TM	MCE	SC	CW	ST	REA	MARB
-2.8	5.6	48.6	84.3	19.5	43.8	-0.1	0.5	101.9	-0.3	0.38	-0.12

Tailor Made Progeny Sells

At Good as Gold Sale